

Hawke's Bay Visitor Guide



Welcome

Welcome to New Zealand's Food and Wine Country. Renowned as a foodies' playground, Hawke's Bay is one of Aotearoa's most desirable culinary destinations and is officially recognised as a Great Wine Capital of the World.

With fertile soils and a warm temperate climate, it boasts thousands of acres of farms, orchards and vineyards, and is headed by a stable of award-winning winemakers, chefs and purveyors. A region of diverse and magnificent landscapes, Hawke's Bay beckons travellers to explore.

Tiaki Promise

TE MATAU-A-MĀUI

The Tiaki Promise is a commitment to care for New Zealand, for now and for future generations. In Hawke's Bay Food and Wine Country our whenua (land) is precious, and everyone who lives and travels here has a responsibility to look after it.

SCAN ME
TO FIND OUT MORE



A vertical graphic overlay with a white border, set against a background of a waterfall. It features the Tiaki logo at the top, followed by the text 'TIKI MEANS TO CARE FOR PEOPLE AND PLACE. THE TIAKI PROMISE IS A COMMITMENT TO CARE FOR NEW ZEALAND, FOR NOW AND FOR FUTURE GENERATIONS.' Below this is the heading 'HOW TO CARE FOR NZ:' and four icons with corresponding text: 'BE PREPARED' (hand holding a house), 'DRIVE CAREFULLY' (car with arrows), 'KEEP NZ CLEAN' (person with trash bin), and 'PROTECT NATURE' (plant with arrows). At the bottom is an icon of two people shaking hands with the text 'SHOW RESPECT'. The website 'TIAKINEWZEALAND.COM' and hashtag '#TIAKIPROMISE' are at the very bottom.

Getting Here

Hawke's Bay can be easily accessed by road, sea and air. Direct flights from Auckland, Wellington and Christchurch fly daily to Hawke's Bay, while Napier Port is well visited by cruise ships during warmer months.

Touring routes connect Hawke's Bay by road, via the Thermal Explorer Highway from the north, the Pacific Coast Highway from the north-east, and the Classic New Zealand Wine Trail from the south.



Getting Around

Hawke's Bay is easy to discover by bike and car. Limestone cycleways crisscross the region, while the regional Go Bus service operates seven days a week. Taxi, shuttle and Uber services are also available.

Find your way with a map from one of the i-site Visitor Information Centres in Wairoa, Napier, Hastings and Havelock North. Visitor information can also be found at Te Huinga Wai, in Waipukurau.



Central Hawke's Bay

Home to historic villages and majestic homesteads, charming wineries and some of New Zealand's most spectacular countryside, Central Hawke's Bay is a gem waiting to be discovered.

This corner of Food and Wine Country blossoms with each season. Explore by bike on the district's well-manicured cycleways. Discover rich Māori heritage, incredible beaches, rugged mountain ranges, or simply sit back and relax in luxurious accommodation. A visit timed during spring will allow you to enjoy the district's annual Spring Fling.



Hastings

Grab a coffee from one of our superb urban cafes and begin your Hastings adventure! The beautifully restored CBD, with its street art and retail precincts, offers shopping and premium eateries, with a multitude of wineries just moments away. Explore our cycleways and take in the glorious scenery, from Te Mata Peak to pristine beaches. By night, catch a show or dine with friends at one of Havelock North's acclaimed eateries to conclude your perfect day in Hastings District.



Napier

As one of the world's most complete collections of Art Deco-styled buildings, Napier city is an iconic visitor destination and the perfect location from which to start your Hawke's Bay holiday.

This compact city thrums with Art Deco experiences, award-winning restaurants and wineries, exceptional speakeasys and wine bars, easy access to Hawke's Bay's extensive network of cycle trails and picturesque waterfronts where experiences abound.



Wairoa

Wairoa (Māori for long river) is the largest town in northern Hawke's Bay, and the gateway for memorable adventures across the district's spectacular, and often untouched, landscapes.

When you've explored the rich heritage of Wairoa township, the jewels of Mōrere, Māhia Peninsula and Lake Waikaremoana await.



New Zealand's Great Wine Capital

In 2023, Hawke's Bay, and the twin cities of Napier and Hastings, was awarded Great Wine Capital status.

As just the 12th destination to be inducted into this elite global network, Hawke's Bay now sits alongside 11 other prestigious wine regions such as Bordeaux (France), Napa Valley (USA), Bilbao (Spain) and Adelaide (Australia).

Admission to the Great Wine Capitals Global Network follows a stringent selection process that looks at a region's winegrowing industry, its history, its wine tourism, educational opportunities, business, and travel, as well as the cities and region itself.

It requires a region to be truly excellent in a global context. Hawke's Bay achieved this and is now New Zealand's Great Wine Capital.



Great Wine Capitals

GLOBAL NETWORK
A WORLD OF EXCELLENCE



Accommodation

Indulging in Hawke's Bay Food and Wine Country can be tiring work, so finding the perfect place to rest your weary head is essential. With a wide variety of accommodation across the region, there is something to suit all needs and budgets.

From luxury retreats and romantic cottages among the vines, to great motels, hotels, B&Bs, backpackers, apartments and family-friendly holiday parks, Hawke's Bay has it all.



Art Deco

Napier City is an outdoor art gallery. Following the devastating 7.8 magnitude earthquake in 1931, Napier's citizens rebuilt their city in the style of the time – Art Deco. The result is the highest concentration of Art Deco buildings on Earth.

The Art Deco Trust, based in Napier, takes regular walking tours around the city, or visitors can opt for a Vintage Car Tour and discover how Art Deco spread through Napier's suburbs and onwards to Hastings as well. In February each year, the region steps back in time to the Great Gatsby era for the iconic Art Deco Festival.



Arts, Culture & Heritage

Hawke's Bay is home to many of New Zealand's best-known artists, photographers, furniture and fashion designers, musicians and filmmakers.

From art installations in public spaces around Napier, Hastings and Havelock North, to a growing number of small galleries representing local and national artists, there is always something new to discover.

The Hastings Art Gallery holds regular exhibitions, while the MTG Hawke's Bay in Napier is home to region's permanent collection of treasures.



Attractions

Families will have a blast in Hawke's Bay with attractions ready entertain the young and young at heart. Head to Marine Parade and discover Bayskate and Par 2 Mini Golf or feed the penguins at the National Aquarium of New Zealand.

Discover the world's largest, most accessible mainland gannet colony at Cape Kidnappers, meet the bees at Arataki Honey Visitor Centre in Havelock North, or get wet and wild at Splash Planet in Hastings.



Cycle

Hawke's Bay is a region made for cycling. The Hawke's Bay Trails are one of New Zealand's Great Rides and offer undulating limestone cycleways that safely and easily connect many of the region's culinary, cultural and environmental must-dos.

Well-developed mountain bike parks are conveniently located nearby all major cities and towns, while bike hire and cycle tour operators are well equipped to ensure you have everything you need.



Events

Hawke's Bay is an events mecca. Celebrate the best of Art Deco, food and wine, music, sports and more as venues across the region light up year-round.

And while the calendar is always busy, highlights include the Art Deco Festival in February, Horse of the Year in March, Hawke's Bay Marathon in May, Hawke's Bay Arts Festival in October, Spring Fling in September and October and F.A.W.C! Food and Wine Classic in summer.



Food & Wine

Hawke's Bay is New Zealand's Food and Wine Country and one of just 12 regions worldwide to claim Great Wine Capital status.

With varied terroir, Hawke's Bay is New Zealand's oldest wine-growing region and an agricultural powerhouse that attracts passionate producers, artisans and urban restaurateurs who deliver New Zealand's foremost array of provenance-led, culinary experiences.

The region's unrivalled bounty ensures visitors experience the full gamut of paddock to plate, grape to glass and tree to table feasting throughout all corners of the region.



Landscapes & Nature

Hawke's Bay is blessed with 360km of coastline to the east, craggy mountain ranges to the west, and a climate conducive to year-round exploration.

A natural playground, Hawke's Bay offers bridled rivers, mountainous forest parks, starkly beautiful waterfalls and lush countryside. Waipātiki, Waimārama and Ocean beaches are jewels in the Hastings District, while Central Hawke's Bay has six stunning beaches to choose from – starting with Kairakau in the north to Te Paerahi in the south.



Māori Culture

Hawke's Bay is known to Māori as Te Matau-a-Māui / The Hook of Māui, in reference to the early navigator Māui, who bestowed the first placenames to the region over 1000 years ago.

Mythical legends play an important role in the transmission of oral histories in Māori culture and Hawke's Bay has a rich heritage of Māori pūrākau (myths and legends).

Much of this can be experienced first-hand through a visit to one or more of the many cultural sites. Most are open to the public year-round, while others can be enjoyed as part of a Māori tourism experience.



Sports & Recreation

With a breadth of outdoor experiences, it stands to reason that sporting and recreation is high on the to-do list in Hawke's Bay.

Golf in Hawke's Bay ranges from world-class, links-style courses to smaller, nine-hole country club courses. Cyclists and runners will enjoy the Hawke's Bay Trails that zigzag across the region, while visitors keen on a spot of rafting, tramping, trout fishing and hunting can head for the Kaweka and Ruahine ranges. Māhia is a haven for those who love fishing and surfing.



Tours

Whether basking in the region's incredible landscapes, taking part in wildlife tours, discovering cultural and heritage experiences, sipping your way across the Great Wine Capital or savouring the food, Hawke's Bay's tours are as diverse as the region itself.

Thankfully, wherever you find yourself in Hawke's Bay, passionate guides will ensure you enjoy their hometown, and are always ready and willing to share their favourite tips for Hawke's Bay.



Walking & Hiking

From easy strolls to multi-day tramps, walking will take you to some of Hawke's Bay's most beautiful spots. Urban walks connect easily to the Hawke's Bay's Trails for scenic exploring, while the Department of Conservation's well-established network of tracks and trails will reward walkers with stunning vistas and nature aplenty.

Highlights include the iconic lockout, Bell Rock, north of Napier, Sunrise Hut in Central Hawke's Bay, Te Mata Park in Hastings and Lake Waikaremoana in Wairoa, where an array of walks abound.



HASTINGS VISITOR INFORMATION CENTRE



**PLAN
BOOK
EXPERIENCE
WHAT'S ON
BUS & FERRY TICKETS
EVENT TICKETS
SHOP**



Hastings isite
Ground Floor,
Municipal Building,
Heretaunga Street East
Tel: 0800 HASTINGS

Havelock North isite
1 Te Aute Road

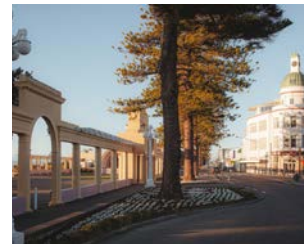
Opening hours:
Monday-Friday 9am-5pm
Saturday 9am-3pm
Sunday & Public Holiday's 10am-2pm

f @hastingsnz
@hastings_nz



Napier isite Visitor Centre

Napier



The team of local experts at Napier isite are ready to organise your Hawke's Bay experience. Pop in and collect local guides and have a chat with the team to book wine tours, cycle hire, and a range of other excursions.

If you want to plan ahead, a phone call or email to the team is all it takes to have your whole stay organised. They can arrange everything, including accommodation amongst the vines, guided tours, or dinner reservations at one of the many award-winning local restaurants.

Napier isite's travel experts will provide ideas and inspiration with a bespoke itinerary so you can make the most of your stay in Hawke's Bay, or anywhere in New Zealand. Plus, there are no booking fees. Open every day except Christmas Day.

A 100 Marine Parade, Napier
P +64 6 834 1911 or 0800 84 74 88
E info@napiernz.com
W napiernz.com



Kennedy Park Resort Napier

Napier



Relax, have fun and spend time with family and friends at Kennedy Park Resort. Enjoy the swimming complex, complete with a heated pool and a separate pool for the kids with fountains to keep them entertained for hours!

The resort has an onsite restaurant, a fantastic playground complete with jumping pillow, along with an entertainment room, gym, sky theatre, free Wifi and much more. Take your pick from a vast range of accommodation options, from contemporary self-contained villas, motel units to cabins, and powered camp sites.

Located near the heart of Napier, the resort is just a short drive (or enjoy one of the many cycle trails) to some of Napier's popular attractions, with McLean Park only a short walk away.

A 11 Storkey Street, Napier
P +64 6 843 9126
E info@kennedypark.co.nz
W kennedypark.co.nz



Napier Beach TOP 10

Napier



Napier Beach TOP 10 Holiday Park is a clean, quiet, spacious and well maintained park located on the beachside in Bay View. Our accommodation options range

from stunning beachfront motels uninterrupted views to stand alone chalets, ensuite cabins, basic cabins and campsites.

A 10 Gill Road, Bay View, Napier
P 0800 287 275
E stay@napierbeach.co.nz
W napierbeach.co.nz



Kiwiesque Luxury Lodge

Napier



Discover luxurious yet relaxed luxury vineyard accommodation in the Esk Valley, with beautiful, open spaces both inside and out. Kiwiesque boasts two exceptional venues each dwelling features multiple bedrooms, fully equipped modern kitchens, spacious open plan

living, seamless indoor and outdoor flow with swimming facilities surrounded by vineyard views. The lodge sleeps up to 18 and the Villa sleeps up to 8 to 10 guests. Great for family gatherings, girls' weekends, corporate groups or even small weddings.

A 18 Linden Close, Eskdale, Napier
P +64 27 254 6291
E stay@kiwiesque.com
W kiwiesque.com



Hawthorne House

Hastings



Hawthorne House is Hawke's Bay's premier boutique bed & breakfast. Each of the four ensuite bedrooms are beautifully designed with our guests relaxation in mind. This historic Edwardian villa is set within formal gardens, located in a tranquil rural setting 10 minutes from

Hastings and Havelock North and 20 minutes from art deco Napier. With the region's best wineries, golf courses and cycle trails close by, this is the perfect location to enjoy what Hawke's Bay has to offer. Let us curate a Hawke's Baycation... just for you!

A 1420 Railway Road Sth, RD 11 Hastings
P +64 6 878 00356
E stay@hawthorne.co.nz
W hawthorne.co.nz



N°1420
HAWTHORNE HOUSE

Cape South Retreat

Havelock North



Cape South is an exquisite private retreat, just 20 minutes from Havelock North and 40 minutes from Napier Airport. It's nestled near beautiful sandy beaches and lush bush reserves. This French colonial-style homestead gardens 16 acres of landscaped gardens, offering a serene oasis amidst

rolling farmland with Pacific Ocean views. Our meticulously crafted homestead defines luxury and tranquillity. Embark on a transformative wellness journey with our acclaimed retreats, designed to rejuvenate your spirit and restore your spirit.

A 55 Waipuka Road, RD12 Havelock Nth
P +64 21 222 9363
E info@capesouth.co.nz
W capesouth.co.nz



The Old Church Villa

Napier



Set amongst the private gardens of The Old Church, the beautifully restored 1913 Villa is full of character and opulence. Centrally located to both Napier and Hastings. The Villa sleeps eight guests in four double bedrooms, each with a

private ensuite bathroom. There is a large open plan kitchen, lounge and dining area. The villa has a lush courtyard in the front surrounded by manicured gardens and a back porch overseeing vineyards and Te Mata Peak in the distance.

A 199 Meeanee Road, Meeanee, Napier
P +64 6 844 8866
E admin@ortons.co.nz
W theoldchurch.co.nz



Swiss-Belboutique Napier

Napier



Swiss-Belboutique Napier stands as the inaugural international 5-star boutique hotel in the heart of Napier. This premium hotel takes pride in offering the most spacious rooms and suites across its 52 options, warmly welcoming both you and your pets. Dive into the gastronomic delights of New Zealand at Saffron

Social Kitchen, a hub spotlighting fresh, local produce. Experience the fusion of intimacy and luxury at a prime location. Enhance your stay by joining our FREE SBEC Loyalty Program, guaranteeing a minimum of 20% off on accommodation and culinary indulgences.

A 36 Munroe Street, Napier
P +64 6 280 6080
E ressqna@swiss-belhotel.com
W swiss-belboutiquenapier.com



Porters Boutique Hotel

Havelock North



Nestled in the heart of Havelock North Village is Porters Boutique Hotel & Conference Centre. Relax in elegantly appointed guest rooms and suites, complete with plush, classic furnishings and adorned with local artwork. Enjoy attentive service within a stylish, intimate space that

reflects the beauty and grandeur of the breathtaking Hawke's Bay region. Porters Boutique Hotel is a 25-minute drive from the Hawke's Bay Airport, and centrally located to some of the region's best restaurants, wineries, cycle trails, golf courses and natural landscapes.

A 4 Te Aute Road, Havelock North
P +64 6 877 1234
E reservations@portersshotel.co.nz
W portersshotel.co.nz



Black Barn Retreats

Havelock North

Black Barn Vineyards in Hawke's Bay, New Zealand offers seventeen unique properties for nightly vacation rental. Each is fully self-contained, exclusively yours for the duration of your stay and selected for its prime location, unique character and original style.



A Black Barn Road, Havelock North
P +64 6 877 7985
E retreats@blackbarn.com
W blackbarn.com

Ashcott Homestead

Central Hawke's Bay

Nestled in the heart of Central Hawke's Bay, Ashcott Homestead has stood for 160 years as a grand reminder of the prosperity of this fascinating region. Positioned on ten beautiful acres we invite the traveler to relax and take in the delights of the quiet countryside.

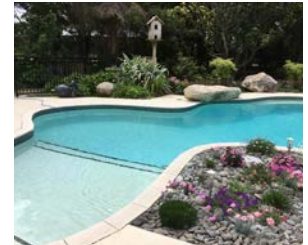


A 2318 Highway 50, Ashley Clinton, Takapau
P +64 21 500 661
E ashcotthomestead2020@gmail.com
W ashcotthomestead.com

Bluebell Lodge and Cottages

Hastings

The perfect getaway set in a lovely rural location 5 km from Havelock North/Hastings. Our studio/cottages have air conditioning, SKY TV, free Wifi, Nespresso coffee pod machines, comfy recliner chairs and King or Superking beds.



A 137 Longlands Road East, RD2 Hastings
P +64 27 220 2262 or +64 6 876 5243
E info@bluebell-cottage.co.nz
W bluebell-cottage.co.nz

Te Awanga Cottages

Te Awanga

Our two delightful cottages are situated in a picturesque Hawke's Bay rural coastal setting; featuring beach walks, cycle trails, wine tasting, golfing and alfresco dining. Both cottages are recently refurbished, beautifully decorated and very well equipped. A real gem in Hawke's Bay!

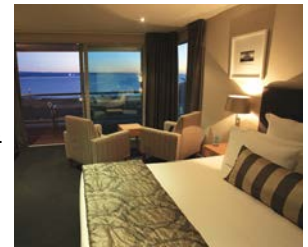


A 369 Clifton Road, Te Awanga
P +64 27 664 3055
E info@teawangacottages.co.nz
W teawangacottages.co.nz

The Crown Hotel

Napier

Set in the picturesque seaside village of Ahuriri, offering boutique waterfront accommodation with 39 guestrooms including studios, 1 and 2 bedrooms. Complimentary undercover carparking, secure bicycle storage, fitness centre, conference facilities, restaurant and bar.



A Cnr Hardinge Rd & Bridge St, Napier
P +64 6 833 8300
E reservations@thecrownnapier.co.nz
W thecrownnapier.co.nz

Palm City Motor Inn

Napier

Centrally located just 1km from downtown Napier and McLean Park, Palm City Motor Inn provides superior accommodation from studios to two-bedroom apartments. Our onsite facilities include a restaurant/bar, outdoor pool, children's playground and conference venue.



A 31 Georges Drive, Napier
P +64 6 835 0005
E info@palmcity.co.nz
W palmcity.co.nz



SPLASH PLANET

THEME PARK!

OPEN FOR SUMMER

NOVEMBER – MARCH

Open 7 days Nov-Feb. Weekends only Feb-Mar.
1001 Grove Rd, Hastings

SPLASHPLANET.CO.NZ



Waiaroha

Heretaunga Water
Discovery Centre

Come in and explore!

Follow our water's
amazing journey from
mountains to sea.

Outdoor area
Open every day

Te whare Waiaroha visitor centre
Please check website
for opening hours

Free entry
waiaroha.co.nz



Toitoti Hawke's Bay Arts & Events Centre



Toitoti is Hawke's Bay's most vibrant and significant arts, culture and events facility. Located in Hastings CBD, with the 108-year-old Opera House at its heart, Toitoti offers a unique blend of awe-inspiring heritage architecture and modern technology.

It truly is a venue unlike any other in Aotearoa, with a diverse programme ensuring something for everyone. Check out our website to see what's on and come experience it for yourself.

Box Office hours

- 9am till 5pm, weekdays; 9am till 3pm Saturdays; 10am till 2pm Sundays and public holidays (Hastings and Havelock North isites)
- One hour before shows (at venue)

101 Hastings Street South,
Hastings
06 871 5289
info@toitotivenues.co.nz
f @toitotivenues
toitotivenues.co.nz



Te Whare Toi o Heretaunga Hastings Art Gallery



Located in the heart of Civic Square,
Te Whare Toi o Heretaunga
presents a lively programme of
local, national, and international
contemporary art.

Free entry

Monday to Friday, 10am - 4.30pm

Saturday, 10am - 4pm and Sunday, 1pm - 4pm

201 Eastbourne St East, Hastings 06 871 5095

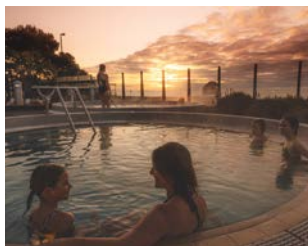
www.hastingscityartgallery.co.nz

f @hastingsartgallery

Photo: Sam Hartnett

Ocean Spa

Napier



Experience relaxation and revitalisation at Ocean Spa, Napier's premier heated pool and fitness complex! Its pools and spas provide panoramic ocean views, creating an ideal setting for workouts and winding down. From a toddler pool to a therapeutic pool with fountains and jets, there's something for everyone. Two outdoor spa pools offer a serene atmosphere for sunrise or sunset soaks, and visitors can enjoy the sauna and steam room. The well-equipped gym overlooks the Pacific Ocean and offers a top-notch workout experience.

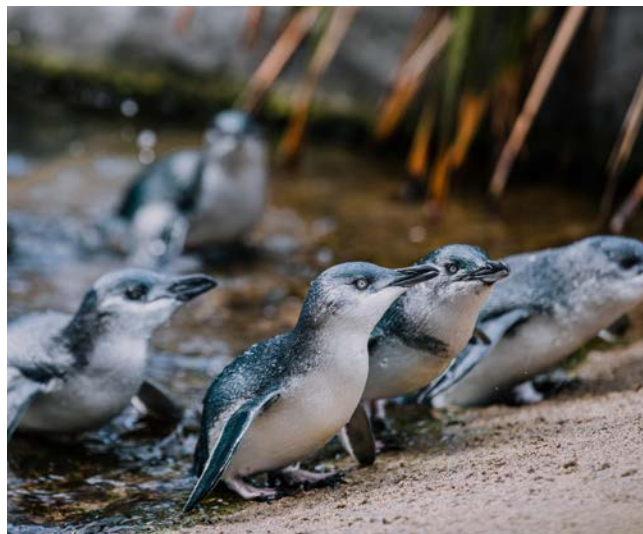
Don't forget to visit The Bach Café where you can refuel on delicious, freshly prepared food while enjoying ocean views. Ocean Spa and The Bach Café are open every day except Christmas Day.

A 42 Marine Parade, Napier
P +64 6 835 8553
E info@oceanspanapier.co.nz
W oceanspanapier.co.nz



National Aquarium of New Zealand

Napier



Discover an exciting world above and below the water at the National Aquarium of New Zealand. Visit Penguin Cove and watch the world famous little penguins/kororā feed and play. See stingrays, kingfish, hapuku, snapper, and other majestic native species swimming over you in the 1.5 million litre oceanarium tunnel. Spot New Zealand's native wildlife – the tuatara and kiwi. For the best way to experience the aquarium, book a Close Encounter with little penguins or terrapins, or take a guided tour (all experiences run daily and bookings are essential).

Daily feeding times are 10.00am for the reef fish, 2pm oceanarium diver hand feeding, and the little penguins at 9.30am, 1.30pm and 3.30pm. Open daily except Christmas Day 9am – 5pm (last entry 4.30pm).

A Marine Parade, Napier
P +64 6 834 1404
E info@nationalaquarium.co.nz
W nationalaquarium.co.nz



Faraday Museum of Technology

Napier



Taking children to a museum might appear daunting, but the Faraday Museum of Technology is a unique and fun experience for all ages due to its interactive displays - which are sure to captivate young minds. It is packed with a diverse collection of contraptions and devices from Hawke's Bay and bygone eras, including vintage telephones, generators, typewriters, classic arcade games, and even a Tesla Coil to name just a few. The Faraday Museum is an excellent destination for learning how history and technology has shaped our lives through the decades.

Bring the family along for an action packed adventure. Open 9am-3pm, Monday, Wednesday, Friday & Saturday. Visit the website to learn about the latest exhibitions, events, and special school holiday hours.

A 2b Faraday Street, Napier
P +64 6 835 2338
E info@faradaymuseum.co.nz
W faradaymuseum.co.nz



Café | Sweet Shop
 Gallery | Sculpture Garden

There's something for everyone at Birdwoods.

'World class - this place is truly amazing.'

'Fantastic outing for young and old.'

'Love the atmosphere - so welcoming.'

'Our favourite place in the Bay.'

'Birdwoods is the best in every way!'



Peoples' Choice Award



298 Middle Road | Havelock North

Open 7 days | (06) 877 1395

www.birdwoods.nz

  @birdwoodsgallery

Mates Travel

Napier



Discover the essence of sunny Hawke's Bay with Mates Travel group tours. Immerse yourself like a local into our one-of-a-kind, educational excursions. Revel in the delights of the region's top-notch food producers. Our tours offer a sensory journey through the best of local fruit, dairy, cheese, wine, and gin. Enjoy the charm of farm life, master the art of gin crafting, and savor exceptional food and wine. Join our signature Deco Distillery Tour in Napier, where Art Deco splendor meets a unique gin-tasting adventure. Wander iconic streets, delve into the National Distillery Company's history, and savor gin in the landmark National Tobacco building.

Explore the Tuki Tuki Dairy Goat Farm for a genuine slice of rural NZ. Discover goat milk production, frolic with goats, sample fresh milk and exquisite lactose-free cheese, and witness sheep shearing and dog herding shows. Connect with our friendly team today to book your unforgettable Hawke's Bay journey.

A 31 Tom Parker Avenue, Napier
P +64 27 430 8993
E jeremy@matestravel.co.nz
W matestravel.co.nz



Par2 MiniGolf

Napier

**PLAY TOGETHER, HAVE FUN!**

Situated perfectly on Napier's Marine Parade, Par2 MiniGolf provides fun for all ages as well as a relaxing environment to enjoy a round or two on our challenging courses. Choose from two 18-hole courses with unique features, or enjoy a round on both and receive

your second round half price. If you're competitive then the leader board is for you, just ask our friendly team to add your score for all to see. Open daily (weather permitting). Look for Par2 MiniGolf on Marine Parade, by the Soundshell by the sea!

A Marine Parade, Napier
P +64 6 834 0248
E info@par2golf.co.nz
W par2golf.co.nz



Cape Kidnappers Golf Course

Clifton



Perched high on this iconic landmark, Cape Kidnappers Golf Course is an experience for all levels. Built on a ridge-and-valley landscape and with stunning sea views, Cape Kidnappers Golf Course plays high above the ocean atop dramatic cliffs.

Ranked as one of the Top 100 Golf Courses in the World by Golf Digest, along with the award winning luxury 5 star lodge Rosewood Cape Kidnappers, this unique property is a must stay and play for all who visit. Bookings essential.

A 446 Clifton Road, Clifton
P +64 6 873 1018
E proshop@capekidnappers.com
W capekidnappers.com



MTG Hawke's Bay

Napier



MTG Hawke's Bay is a place where people, objects and ideas meet. Home to a nationally significant collection of art and objects that form the foundation of distinctive exhibitions. This is the place to get a fresh perspective on the region and stories new and familiar,

including the 1931 Hawke's Bay earthquake. Our long term exhibition *Kuru Taonga: Voices of Kahungunu* is all about the history of people and places of Ngāti Kahungunu, telling the stories and events that shaped Te Mataua-Māui as it is today.

A 1 Tennyson Street, Napier
P +64 6 835 7781
E info@mtghawkesbay.com
W mtghawkesbay.com



Deco City Discoverer

Napier



We simply love getting you out and about in Hawke's Bay! Take a local highlights tour to some of our region's many landmarks and wineries and have loads of fun on the way. Group and party tours and shuttles in our flagship Art Deco inspired buses 'Veronica' & 'Belle' are a truly unique experience. Each

29-seat bus sports an open rear deck, where you can safely enjoy the views while we drive. Our luxury 20-seat Mercedes or 12-seater vans are ideal for smaller groups. For personalised, private hire our stylish, classic 1954 Daimler Conquest or London Taxi-cab are perfect for weddings or private tours.

A 30 Maltby Street, Meeanee, Napier
P +64 27 694 4322
E info@decocitydiscoverer.co.nz
W decocitydiscoverer.co.nz



Gannet Safaris Overland

Clifton



Experience Hawke's Bay's unique wildlife encounter in one of our 4WD buses taking you overland through Cape Kidnappers Station and NZ's largest privately owned wildlife sanctuary. We bring you to within metres of these remarkable birds with their piercing eye markings and golden crowns. You will be

mesmerised watching them nesting, preening, performing their courtship dance and the chicks are adorable. Tours are 3 hours NO WALKING required - Daily tours (INCLUDING Christmas Day) at 9:30am & 1:30pm from 1st Sept - 30th April 9:30am and 1:30pm Private and Sunrise tours available.

A 396 Clifton Road, Te Awanga
P +64 6 875 0888
E enquire@gannetsafaris.co.nz
W gannetsafaris.co.nz



Winery Tours Hawke's Bay

Hawke's Bay



Get to the heart of Hawke's Bay wine... Winery Tours Hawke's Bay will take you off the beaten track with an intimate and relaxed tour of boutique wineries. Our passionate, wine-loving tour guides will help you explore and experience the places where the real magic

happens. Talk to the winemakers, learn of the passions, their history and their future. Taste their amazing wines and go behind the scenes to discover what makes their wine unique. We'll take you to taste the real Hawke's Bay.

A 807a Riverslea Road South, Hastings
P +64 800 946 342 or 0800 WINE HB
E admin@wthb.nz
W winerytourshawkesbay.co.nz



Arataki Honey Visitor Centre

Havelock North



We are open seven days a week and are FREE to visit. Here you can gain an amazing insight into the honeybee and honey production together with FREE honey tasting of our 12 different varieties - 100% Arataki pure New Zealand honey. Our onsite hives enable you to

explore the life of these busy little creatures up close. See if you can spot a Queen Bee? In summer it may be possible to watch a beekeeper at work (check our Facebook page for details of what's happening).

A 66 Arataki Road, Havelock North
P +64 6 877 7300
E gayle@aratakihoneyhb.co.nz
W [facebook.com/AratakiHoneyVC](https://www.facebook.com/AratakiHoneyVC)



Black Barn Growers' Market

Havelock North

The Black Barn Growers' Market is one of New Zealand's original farmers' markets and has become a 'must do' for locals and visitors on Saturday mornings through the summer. Get the very best of the Hawke's Bay growers, bakers and producers.



A Black Barn Road, Havelock North
P +64 6 877 7985
W blackbarn.com

Smith & Sheth Heretaunga Wine Studio

Havelock Nth

The Heretaunga Wine Studio offers a sensory journey exploring three New Zealand winegrowing regions in an intimate barrel hall and theatre. Guided by a knowledgeable sommelier, sample wines from the Smith & Sheth, Pyramid Valley & Lowburn Ferry collections.



A #2 The Courtyard, 4 Te Aute Rd, Havelock Nth
P +64 6 650 5550
E bookings@smithandsheth.com
W smithandsheth.com

Silky Oak Chocolates

Napier

The Best NZ made chocolates, plus so much more.

Chocolate Shop & Factory, Chocolate Museum, Café, Gift Shop, Pantry Shop plus Gelato.

A 1131 Links Road, Napier
P +64 6 845 0908
E info@silkyoakchoccs.co.nz
W silkyoakchoccs.co.nz

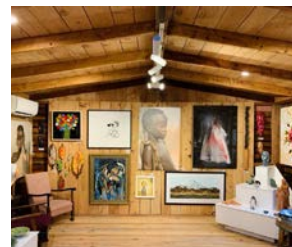


The Art Shed

Napier

The Art Shed is located at Crab Farm Winery, Napier. It is a rustic shed with a 'hygge' ambience - one of warmth and friendly vibes. We represent 90+ New Zealand artists and have paintings, sculptures, garden art, curios and gifts. Everything is also available online.

A 511 Main North Road, Bay View, Napier
P +64 27 281 4070
E paulasugden@xtra.co.nz
W theartshed.co.nz



Hawke's Bay Farmyard Zoo

Haumoana

A great family outing, 15 minutes from town. Enjoy 3 hectares of limestone paths and gardens with a picnic. Feed the animals, ride a pony, or the "Farmyard Express Train." Customers say we're Hawke's Bay's best value family entertainment, open daily 10am to 5pm.

A 32 East Road, Haumoana, Hastings
P +64 6 875 0244
E hbfarmyardzoo@yahoo.com
W farmyardzoo.co.nz



Enigma Escape Rooms

Napier

Ready to think outside of the square? Mysteries, puzzles, locks and magic tricks are just a few elements you will find in our innovative, narrative driven stories at Enigma Escape Rooms. Try our Outdoor Spy Adventure. Education and Corporate teambuilding. Work functions.

A 14 Herschell St, Napier
P +64 27 520 6604
E newzealandescaperooms@gmail.com
W newzealandescaperooms.com



Mohaka Rafting

Napier

Enjoy the thrills on our day and multi-day trips on Grade 2, 3 and 5 water. Our most popular adventure is Grade 3 (4+hrs on water) with cliff jumps, gorges, canyons, rapid swims and gold mine visit. Young families for Grade 2, while serious rafters match Grade 5.



A 3408 State Highway 5, Napier
P +64 27 825 8539 or +64 6 839 1808
E info@mohakarafting.co.nz
W mohakarafting.co.nz

Coastal Wine Cycles

Haumoana

We're a dynamic, young company who embraces relaxed cycling for epic experiences. Our awesome bikes and location create perfect adventures. Explore on Californian beach cruisers with comfy features. Guaranteed: No Wedgies, No Hills, No Backtracking.



A 6 Beach Road, Haumoana
P +64 6 875 0302
E info@winecycles.co.nz
W winecycles.co.nz

Napier City Bike Hire & Tours

Napier

Our friendly team are experts on everything cycling in Hawke's Bay. We offer: day winery cycle tours • casual hire - e-bikes, pathway & cruiser bikes, tandems, kids bikes, seats & trailers • guided experiences • multi-day itineraries • bike drop-offs • trail & accommodation transport



A 117 Marine Parade, Napier
P +64 27 895 9595 or 0800 245 344
E ride@bikehirenapier.co.nz
W bikehirenapier.co.nz

4 x Wheeler Surrey Bike Hire

Haumoana

Cruise the coastal cycle trail, stop at a renowned café or winery while enjoying stunning Cape Kidnappers views! We offer 12 bikes, accommodating up to 30 people, ideal for group bookings like birthdays, staff events, and parties. Min 1-hour hire, half-day slots from 9am-1pm & 1pm-5pm.



A 32 East Road, Haumoana, Hastings
P +64 6 875 0244
W farmyardzoo.co.nz

On Yer Bike Winery & Coastal Trails

Clive

Come discover the coastal cycle trails of Hawke's Bay with On Yer Bike. Start in the coastal town of Clive. Choose from 9 amazing routes; ride along the coast, cycle the rivers, or explore the wineries of Hawke's Bay, we have a bike trail for you.



A 189 Main Road, Clive
P +64 279 600 300
E info@onyerbikehb.co.nz
W onyerbikehb.co.nz

Takaro Trails Cycle Tours

Ahuriri



Are you wanting to explore scenic Hawke's Bay by bicycle? Award-winning Takaro Trails will get you out cycling on the Hawke's Bay Trails visiting the amazing wineries and experiencing the best of our region. We offer winery tours, accommodation pick-ups, shuttles &

bike drop-offs. Hire a standard bike or electric bike - join us for one day or go on a multiday adventure and really explore the trails. Give us a call or book online - we can help you have the best day in sunny Hawke's Bay!

A 9 Nelson Quay, Ahuriri, Napier
P +64 800 825 276
E info@takarotrails.co.nz
W takarotrails.co.nz



Hawke's Bay Trails

Spanning over 200 kilometers of gentle terrain, the Hawke's Bay Trails offer a serene journey through the heart of New Zealand's esteemed Food and Wine Country. With a network leading to 50 captivating destinations, these trails present the perfect blend of culinary delights, scenic beauty, and authentic local experiences.



ART DECO TRUST WALKS & TOURS



TAKE OUR WORLD FAMOUS WALKING TOUR

Discover the Art Deco Capital of the world with a guided walking tour led by one of our local Art Deco Trust Guides. Your tour begins with the short film 'The Day that Changed the Bay' followed by an immersive tour of the Art Deco Quarter.

BOOK YOUR VINTAGE CAR TOUR

Indulge in a unique experience with a tour of Art Deco Napier in a luxurious vintage Packard motorcar! You'll be chauffeured through the Art Deco quarter to historic Port Ahuriri, passing by several fascinating locations. Continue through the art deco suburbs to a landmark building for a fabulous photo opportunity, and discover why Hawke's Bay is celebrated as a great wine capital of the world!



ART DECO TRUST

7 Tennyson Street, Napier.
P.06 835 0022 www.artdeconapier.com

SHOP HOURS

1 October – 31 March: 9am-5pm
1 April – 30 September: 9.30am-2.30pm

ART DECO FESTIVAL NAPIER

Join us for New Zealand's largest heritage festival and the best party you'll ever attend! The Art Deco Festival Napier offers an immersive experience brimming with energy, optimism, and all the Jazz of the Art Deco era, attracting visitors from around the world every February. In July, we celebrate the best Hawke's Bay has to offer at our annual Winter Deco festival. So, don your furs, serge suits, and cloche hat, and join us for an experience unlike any other!

www.artdecofestival.co.nz



ART DECO FESTIVAL NAPIER

15 - 18 Feb 2024
13 - 16 Feb 2025

WINTER DECO

19 - 21 July 2024
18 - 20 July 2025



Itineraries?

Try Hawke's Bay 'Recipes'



Icons of Hawke's Bay

The must-see, the must-experience, the must-discover highlights that every traveller tells you about.

DURATION
1 DAY

CATEGORY
FOOD & WINE



24 hours in Food and Wine Country

All the must-do's when you've only got one night in Hawke's Bay.

DURATION
24 HOURS

CATEGORY
HIGHLIGHTS



Twin Cities Urban Route

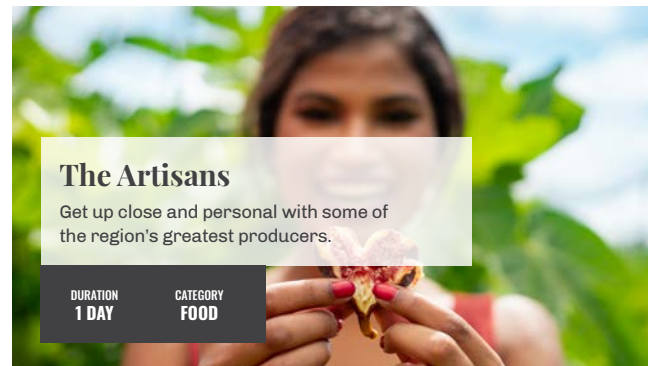
An urban culinary adventure to rival even the most bustling metropolises.

DURATION
2 DAYS

CATEGORY
FOOD & WINE

Here in New Zealand's Food and Wine Country, great recipes are in our DNA. From daytrips to multi-day journeys, these recipes for your Hawke's Bay holiday are sure to rise.

Be sure to share your experiences:
@hawkesbaynz #foodandwinecountry

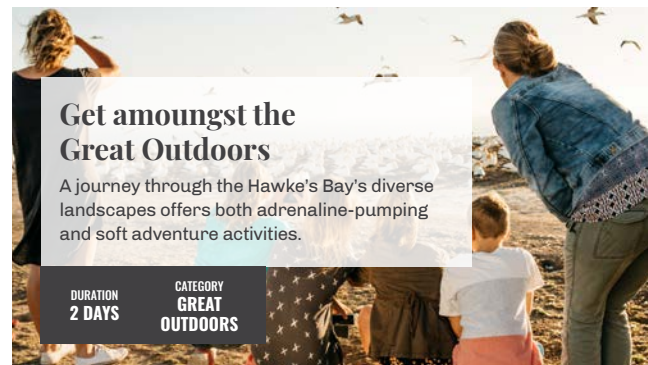


The Artisans

Get up close and personal with some of the region's greatest producers.

DURATION
1 DAY

CATEGORY
FOOD



Get amongst the Great Outdoors

A journey through the Hawke's Bay's diverse landscapes offers both adrenaline-pumping and soft adventure activities.

DURATION
2 DAYS

CATEGORY
GREAT OUTDOORS



The 48-hour Hawke's Baycation

Two full-to-the-brim days, bursting with Food and Wine Country goodness.

DURATION
2 DAYS

CATEGORY
THE BEST BITS

Askerne Estate Winery

Havelock North



Askerne is a boutique, single estate, family owned winery that offers a broad range of wines. We have something for everyone. Tastings, wine flights, a glass of wine, a "build your own" picnic or an ice cream for the kids. Our "build your own picnic" allows you to select your own favorites from our comprehensive range of individually packaged cheeses, meats, olives, seafood, pate and condiments that are locally and internationally sourced. Some vegetarian and gluten free options are available. Enjoy with a glass of stunning Askerne wine in our idyllic vineyard setting. In the busier months we do accept walk-ins for tastings although priority will be given to those who have booked.

For Gourmet Picnics, wine flights or a glass of wine, bookings are not essential but recommended for larger groups on weekends and public holidays. We look forward to sharing our story and space with you. Open daily 10.00am to 5.00pm.

A 267 Te Mata Mangateretere Road, Havelock North
 P +64 6 877 2089
 E cellardoor.askerne@xtra.co.nz
 W askernewines.co.nz



Church Road Winery

Taradale



Church Road Winery Restaurant offers the perfect combination of premium wine, culinary delights, bespoke experiences and idyllic surroundings for a memorable visit.

Our lunch menu utilizes local produce and traditional influence to showcase innovative flavours. Indulge in a platter in the warm sunshine under the shade sails or an exquisite dining experience within the grandeur of our Tom McDonald Cellar or on our outdoor terrace. The menu is expertly paired with Church Road's exceptional wines and is an experience not to be missed.

Let us show you our secrets on our intimate and iconic TOM Experience within the atmospheric surroundings of our underground museum. Taste three flights of our flagship TOM range, only produced in exceptional vintages, while enjoying selectively matched savoury bites.

A 150 Church Road, Taradale, Napier
 P +64 6 882 3098
 E thecellardoor@churchroad.co.nz
 W church-road.com



Craggy Range

Havelock North



Established in 1998 in the shadow of the spectacular Te Mata Peak, Craggy Range is an iconic family-owned winery. Recognised with two hats at the Cuisine Good Food Awards and the coveted award of Winery Restaurant of the Year, the culinary heart of Giants Winery, Craggy Range Restaurant, is an intimate, comfortable & relaxed space, the perfect setting to enjoy Head Chef Casey McDonald's regionally inspired menu. Celebrating Hawke's Bay's elements and abundant produce, the menu changes regularly to reflect what is sourced locally or shining in our organic kitchen garden.

Discover our unique story and explore the spaces that make Craggy Range an unforgettable destination at our Cellar Door - an engaging experience that captures the spirit of this remarkable place. Our skilled team offer unique tastings, from the latest release wines to our immersive Giants Estate Experience.

A 253 Waimarama Road, Havelock North
P +64 6 873 7126
E info@craggyrange.com
W craggyrange.com



Firsthand Coffee

Havelock North



One of the country's leading specialty coffee roasters, Firsthand Coffee calls Havelock North home. Since 2010 we have supplied Hawke's Bay locals with the best coffee and the best customer service through our cafes and wholesale partners. You can also find everything you need on our website, from a full selection of our single-origin coffee, specialty espresso blends, brewing equipment, and info on our monthly coffee classes. In the heart of Havelock North village and surrounded by delicious eateries, you'll find us everyday at our onsite cafe, Workroom.

You can also come and see us at the Hastings Farmers' Market every Sunday and at our other cafes - Box Espresso in Clive, Crazy Good in Ahuriri, Cupple in Hastings, and most recently Basic Needs in Te Awanga.

A 2/15 Joll Road, Havelock North
P +64 6 650 4938
E admin@firsthand.coffee
W firsthand.coffee



Te Mata Figs

Havelock North



Te Mata Figs is a specialist fig grower and artisan creator of award winning fig products. The Figgyery Café & Shop brings figs to life in everyday baking and food (along with local, seasonal ingredients) in our chefs' gluten free creations. Join us to enjoy

great food, coffee and beautiful surroundings, and of course stock up on your favourite figgy products (or buy online). Fresh figs available end December to mid-January; mid- February to end April. Open: Monday to Friday 8am - 4pm; Saturday & Sunday 9:30am - 4pm.

A 205 Napier Road, Havelock North
 P +64 27 476 4777
 E info@tematafigs.co.nz
 W tematafigs.co.nz



Hygge at Clifton Bay

Clifton



Hygge at Clifton Bay is the most scenic function venue in Hawke's Bay. Weddings, birthdays, business functions or celebrating with friends, Hygge is a unique setting for a welcoming and memorable cafe experience. An oasis at the end of the cycle way, Hygge is nestled in beautiful Clifton Bay, the gateway to the iconic Cape Kidnappers.

Either choose from our tasty menu selection or a treat from a delectable range of freshly baked goods, locally roasted coffee, homewares and cold refreshments. We offer high quality food and excellent service. No matter what your requirements are. It would be our pleasure to welcome you. Relax. Unwind. Enjoy Hygge.

A 468 Clifton Road, Te Awanga
 P +64 29 543 3726
 E hygge@cliftonbaycafe.co.nz
 W hyggeatcliftonbay.nz



Rosewood Cape Kidnappers

Te Awanga



The lush vegetables, fruits and herbs that are harvested from Rosewood Cape Kidnapper's own garden, alongside locally sourced produce, shape the seasonal cuisine meticulously crafted by Head Chef James Honore. With menus changing on a daily basis,

all ingredients can be showcased at their very best, when crops have reached their peak of flavour. We invite you to dine at Rosewood Cape Kidnappers to experience the exceptional, locally sourced cuisine on your next visit to Hawke's Bay. Bookings essential.

A 446 Clifton Road, Te Awanga
 P +64 6 875 1900
 E capekidnappers@rosewoodhotels.com
 W rosewoodhotels.com/en/cape-kidnappers



Cellar 495

Hastings



Cellar 495 combines neighbourly warmth and hospitality with world-class wine expertise at Hastings' newest wine bar, bistro, tasting room, and wine shop - all led by the world's 495th Master of Wine,

Michael Henley. Our wine selection represents the finest from around the globe, served alongside seasonal cuisine that captures the spirit of New Zealand.

A 319 Heretaunga Street East, Hastings
 P +64 6 870 6308
 E enquiries@cellar495.co.nz
 W cellar495.co.nz



Oak Estate Cellar Door & Kitchen

Hastings



Oak Estate Cellar Door and Kitchen is a boutique cellar door and bistro, where we specialise in crafting delicious lunch dishes using locally sourced ingredients. We offer a carefully curated selection of Oak Estate wines, handcrafted from grapes grown both on-site and

within the Bridge Pa Triangle, to perfectly complement your meal. Join us for lunch or a wine tasting, share in our passion for great food and wine and discover why we are one of the most popular winery restaurants in the area.

- A 403 Ngatarawa Road, Bridge Pa, Hastings
- P +64 27 406 7716
- E bookings@oakestatewines.co.nz
- W oakestatewines.co.nz



Smith & Sheth Cellar Door

Havelock North



In the heart of Havelock North village, the Smith & Sheth Oenothèque offers something truly special for wine lovers. Enjoy a seated tasting of wines from Smith & Sheth, Pyramid Valley and Lowburn Ferry guided by

knowledgeable sommeliers, or settle into the wine lounge with a glass from a continually evolving wine list of global and local highlights. A thoughtful selection of platters and small plates to match, make for a wine destination in a class of its own.

- A #2 The Courtyard, 4 Te Aute Road, Havelock North
- P +64 6 650 5550
- E bookings@smithandsheth.com
- W smithandsheth.com



Mission Estate Winery

Napier



Experience the heritage of New Zealand's oldest winery, Mission Estate, set amidst the Taradale hills. Delight in tastings within La Grande Maison, hearing tales of its 1851 origins. You can also enjoy sweeping views of Napier City and the coast beyond at the Mission Estate Restaurant.

Cellar Door: 9am-5pm, Sun 10am-4:30pm. Restaurant open daily from 10am until late for an unforgettable experience.

To book a table please call us on 06 845 9354 or email restaurant@missionestate.co.nz

- A 198 Church Road, Taradale, Napier
- P +64 6 845 9353
- E cellardoor@missionestate.co.nz
- W missionestate.co.nz



Trinity Hill

Hastings



Our iconic New Zealand winery celebrates over 25 years of world-class winemaking in the famed Gimblett Gravels District of Hawke's Bay. In 1993, having recognised the outstanding potential of the Hawke's Bay's Gimblett Gravels winegrowing district, Trinity Hill became one of the region's early pioneers, planting

grape vines on a barren plot which continues to produce exceptional wines today. Trinity Hill's Cellar Door is open for tastings, wine sales, platters or wines by the glass from Wednesday - Sunday, 11am - 5pm. Bookings are recommended via our website or phone.

- A 2396 State Highway 50, RD 5, Hastings
- P +64 21 737 058
- E enquiries@trinityhill.com
- W trinityhill.com



Black Barn Vineyards

Havelock North

Black Barn's aim is to offer a great time, whether through wine tasting at our Cellar Door, leisurely Bistro lunches, Saturday mornings at the Growers' Market, evening concerts at the Amphitheatre, memorable weddings, or by staying in one of our 17 retreats. We look forward to hosting you.



A Black Barn Road, Havelock North
P +64 6 877 7985
W blackbarn.com

Black Barn Bistro

Havelock North

Our award-winning Bistro is central to the Black Barn experience. Chef Regnar Christensen's passion for Hawke's Bay produce shines through the ever-changing menu, emphasizing simplicity and deliciousness over frills. Open for lunch and dinner; visit our website for details.



A Black Barn Road, Havelock North
P +64 6 877 7985
W blackbarn.com

Clearview Estate Winery

Te Awanga

Settle in for a long lunch with a range of our renowned wines, enjoying the al-fresco coastal views from our rustic courtyard restaurant. The menu changes seasonally, celebrating the produce of fertile Hawke's Bay pastures & the fresh kaimoana of Aotearoa.



A 194 Clifton Road, Te Awanga
P +64 6 875 0150
E restaurant@clearviewestate.co.nz
W clearviewestate.co.nz

De La Terre Winery

Sherenden

We are a small, family-owned winery, 20 minutes from Hastings & Taradale, producing an extensive range of wines, all hand-crafted on the premises. Our café serves grazing plates & wood-fired pizzas - bookings are essential for the café. Refer to our website for opening times.



A 1426 Taihape Road, Sherenden
P +64 6 874 3224
E wines@delaterre.co.nz
W delaterre.co.nz

Stonecroft

Hastings

We are tiny, family owned winery making only organic, Gimblett Gravels wines. Most of our wines are made for cellaring, and we make a couple of wines with no added sulphur for earlier drinking. The winery is best known for Syrah.



A 121 Mere Road, Roy's Hill, Hastings
P +64 6 879 9610
E wine@stonecroft.co.nz
W stonecroft.co.nz

Te Mata Estate

Havelock North

Te Mata is NZ's original fine wine estate, with every step of winemaking undertaken on site - from vine to glass - at the foothills of Te Mata Peak. Stop by our Cellar Door or book a private tasting to try out world-renowned wines, all grown and produced right here in Hawke's Bay.



A 349 Te Mata Road, Havelock North
P +64 6 877 4399
E cellardoor@temata.co.nz
W temata.co.nz

Te Awanga Estate

Te Awanga

Nestled on an elevated site in the foothills of Te Awanga with views to the ocean. Chill, take your time, taste the complete range from international award-winning winemaker Rod McDonald: Trademark, Quarter Acre, Wildsong and One Off. All day grazing and wine tasting.



A 376 Parkhill Road, Te Awanga
P +64 6 875 0553
E cellardoor@teawangaestate.co.nz
W teawangaestate.co.nz

St Georges Restaurant

Havelock North

St Georges is the perfect place to enjoy exceptional food and genuine hospitality. Multi-award winning chef, Francky Godinho uses only the freshest ingredients, with more than 90% of the produce grown, nurtured and hand-picked from his on-site organic garden.



A 452 St Georges Road South, Havelock Nth
P +64 6 877 5356
E reservations@stgeorgesrestaurant.co.nz
W stgeorgesrestaurant.co.nz

Giant Brewing

Havelock North

Havelock North's only brewpub. Family friendly with a full menu, wines, boutique spirits and 12 taps of beer brewed both onsite and at other New Zealand craft breweries.



A 6 Treachers Lane, Havelock North
P +64 27 220 3043
E info@giantbrewing.co.nz
W giantbrewing.co.nz

Adoro Cafe

Napier

Adoro Cafe is known for the best coffee in town and a great food selection to choose from with GF, keto and vegan friendly. We have tea, milkshakes, smoothies, a huge cold drink range and not to mention our cabinet is full of sweets and savouries. Visit us today & enjoy the best of Napier.



A 1 Dickens Street, Napier
P +64 6 835 1747
E manish@adorocafe.co.nz
W adorocafe.com

Peak House

Havelock North

A welcoming cafe, eatery and venue located at the top of Te Mata peak. Grab a coffee, bite to eat or a drink from the bar while you look out over the best views in Hawke's Bay. Our house is your home.



A 357 Te Mata Peak Road, Havelock North
P +64 6 280 5474
E hello@thepeakhouse.co.nz
W thepeakhouse.co.nz

Brown Dog Espresso

Haumoana

You won't be disappointed when you come grab a coffee & bite to eat while dipping your toes into the ocean. We would love for you to visit us here in the heart of Cape Kidnappers. Choose from a range of alternative lattes, smoothies, coffees, raw cakes, toasties & pastries.



A 12 Clifton Road, Haumoana
P +64 27 355 4572
E browndogespresso@hotmail.com
W browndogespresso.com

HAWKE'S BAY

F.A.W.C!

FOOD AND WINE CLASSIC

F.A.W.C! Food and Wine Classic is Hawke's Bay's iconic culinary festival, held in stunning locations throughout the region.

When you've got a reputation as New Zealand's food and wine country, it goes without saying that you need a culinary festival which delivers on that promise.

Hawke's Bay F.A.W.C! Food and Wine Classic fits the bill perfectly if we do say so ourselves. A glorious blend of local and visiting talent, mouthwatering produce to rival any region, enticing event themes to suit all manner of tastes, and stunning venues to showcase the lot.

Keep an eye on www.fawc.co.nz for all the details - make sure you sign up to be a registered F.A.W.C!er to get regular updates and an exclusive 24-hour headstart on ticket sales.

Find Out More

 Visit us at hawkesbaynz.com

 [hawkesbaynz](#)

 [hawkesbaynz](#)

 Call in to our local isites:

Hastings 0800 427 846

Napier 06 834 1911

Wairoa 06 838 7440

